

# The impact of the new IPA Project Routemap on project controls services

- panel discussion with



**Richard Simpkins**  
Controls & Performance  
Director South West for  
Turner & Townsend



**Alan Couzens**  
Capital Portfolio Director  
for National Highways



**Dr Frederick Levy**  
Principal Consultant,  
Programme Advisory,  
Turner & Townsend



**Jon Loveday**  
Director of Infrastructure,  
Enterprise and Growth for  
Infrastructure Projects  
Authority (IPA)



**Rob Halstead**  
Director, Infrastructure  
for Turner & Townsend

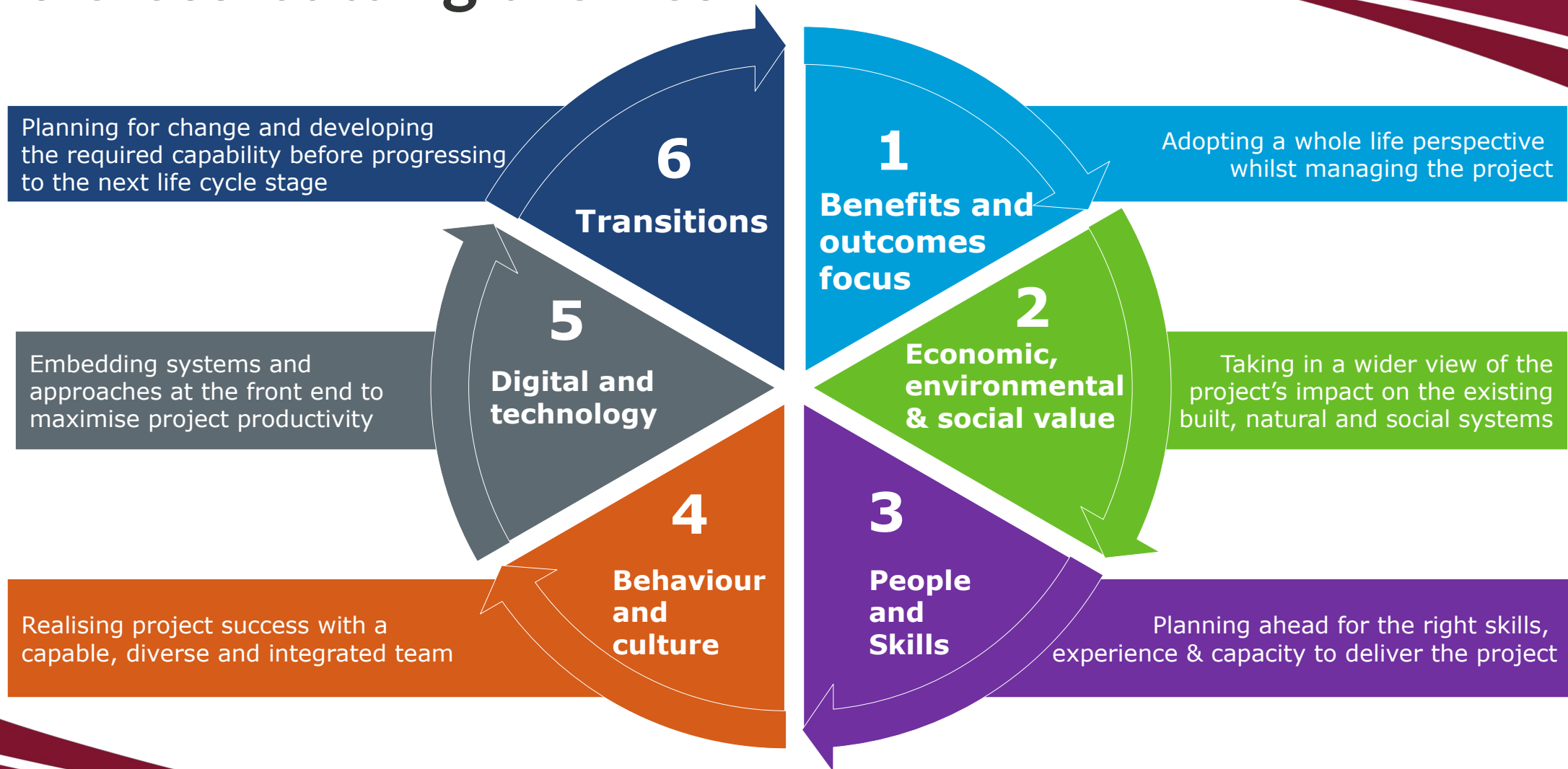


Turner & Townsend

# Routemap journey



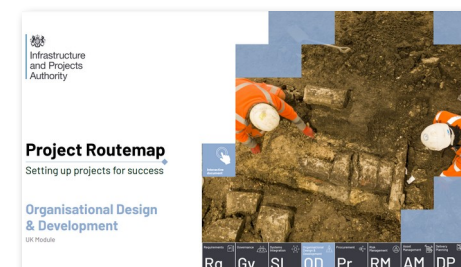
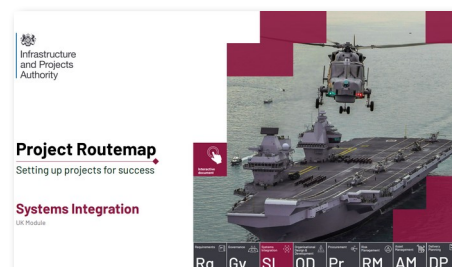
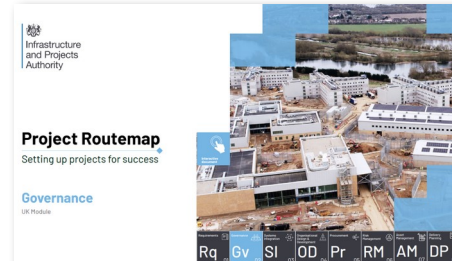
# 6 cross-cutting themes



Turner & Townsend

# Project Routemap

Setting up projects for success



# Q & A



Turner & Townsend

# THANK YOU

We look forward to  
meeting you at Stand 18

